



SWRC43

Wireless Reversing Aid Camera

with 4.3 inch LCD Monitor

Information For Use



Table of Contents

Intention for Use & Legal Disclaimer	03
Product Elements	03
How This Kit Works	04
Installation	04
Mounting the LCD Monitor	05
Mounting the Number Plate Bracket	05
Mounting the Butterfly Bracket	06
Electrical Cable Installation Guide For Camera	06
Operating Instructions	07
How to Turn On/Off	07
Paring the Camera and LCD Monitor	07
Adjusting Brightness on Display	07
Screen Orientation	08
Reversing Guidelines	08
Cleaning & Maintenance	09
Technical Support	10
Spare Parts	10
Technical Specification	11
Product	11
Camera Specification	11
LCD Monitor Specification	12

Thank you for purchasing this Wireless Reversing Aid Camera Kit from Streetwize. This product is intended for use as a reversing aid, to help drivers reverse vehicles into tight spots. It is suitable for use on vehicles such as hatchbacks, SUVs, small motorhomes and vans.



PLEASE READ THROUGH THE BELOW INFORMATION IN THIS DOCUMENT AND KEEP FOR FUTURE REFERENCE.

Legal Disclaimer

STREETWIZE WIRELESS REVERSING AID CAMERA KIT IS DESIGNED AS A DEVICE TO AID AND ASSIST THE DRIVER. ALTHOUGH A VISUAL AID WHICH ALLOWS YOU TO CLEARLY SEE TO THE REAR OF A VEHICLE, IT DOES NOT ADMONISH OR REMOVE THE RESPONSIBILITY OF DRIVING A VEHICLE FROM THE DRIVER OF THE VEHICLE. THE RESPONSIBILITY OF THE VEHICLE IS SOLELY WITH THE DRIVER OF THE VEHICLE AND SO THE DRIVER MUST ENSURE THAT THEY FULLY ADHERE TO SAFE DRIVING PRACTICES AND THEIR LEGAL RESPONSIBILITY WHEN USING THIS PRODUCT AT ALL TIMES.

Product Elements

1. 4.3 inch LCD monitor
2. Waterproof camera
3. Suction mount attachment for monitor
4. 12V power cable for LCD monitor
5. Camera power cord and wireless transmitter
6. Double-sided adhesive pad
7. 2 x screws
8. 2 x buckles
9. License plate mounting bracket
10. Butterfly mounting bracket

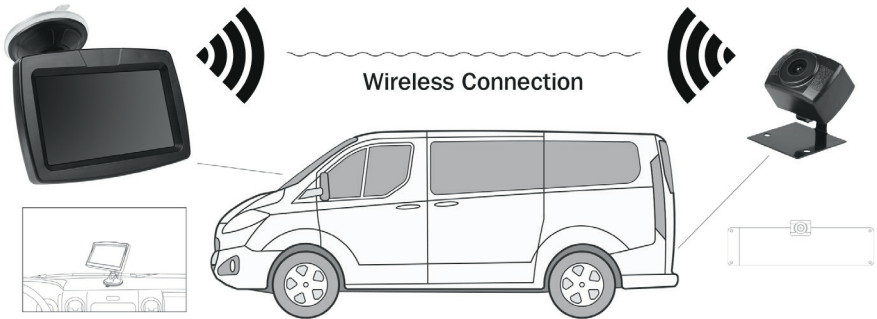


How This Kit Works

This reversing aid kit comprises two main components, the LCD display monitor and the waterproof camera.

The waterproof camera wirelessly transmits the live video footage directly to the LCD display. The LCD display is powered via your vehicle's 12V socket and the waterproof camera is powered via your vehicle's reversing lights. **Figure 1 below illustrates how this kit works.**

Fig. 1



Installation

When installing this kit, we highly recommend that you seek professional assistance, especially for connecting the camera to the vehicle's reversing lights and circuit.

Attention: When installing the camera to your vehicle, you will need to drill a hole in your vehicle's rear bumper to feed the waterproof camera's wiring to your vehicle's electronics board for the reversing lights.

Please refer to your vehicle handbook to find out how to access the wiring circuit for your vehicle's reversing lights.

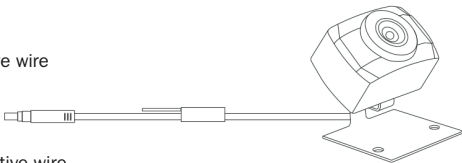
Figure 2 below shows you the electronics connection guidelines. Please see page 6 for more detailed instructions for wiring the camera.

Fig. 2

Red wire connects to reversing light positive wire



Black wire connects to reversing light negative wire



Mounting the LCD Monitor

1. Attach the suction mount to the back of the LCD monitor as shown in figure 3 and then attach to the desired location in your vehicle i.e. dashboard, windscreen etc.
2. Ensure that the surface for mounting is both clean and dry before fixing the suction mount.
3. Connect the cable attached to the monitor to the 12V power cable, and then insert the 12V power cable into the vehicle's 12V power socket.

Attention: When mounting the monitor, ensure that it does not obstruct the drivers vision when driving.

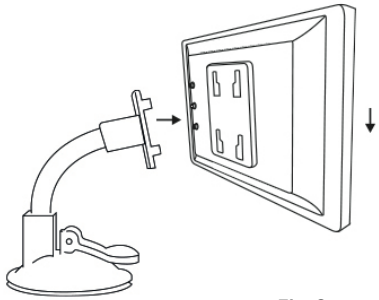


Fig. 3

IMPORTANT: The LCD monitor does NOT come with a rechargeable battery and will need to be connected to your vehicle's 12V power socket. If you need access to a 12V socket when using this product, we recommend that you purchase a suitable 12V socket adaptor that converts your single 12V socket into two or three 12V sockets. For this, we highly recommend you use Streetwize products SWPS1, SWPS9 and SWTSA.

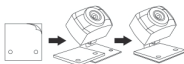
Mounting the Number Plate Bracket

1. Remove the top two rear number plate screws.
2. Stick on the double-sided tape on the front-facing side of the license plate mounting bracket on the waterproof camera.
3. Position the camera on top of the number plate, ensuring the camera's license plate mounting bracket is behind the number plate.
4. Screw back the number plate screws.
5. Adjust the angle of the camera as needed.

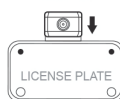
NO 1:



NO 2:



NO 3:



NO 4:



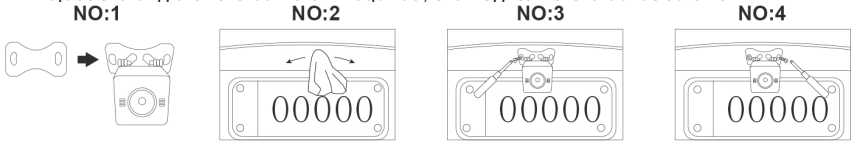
NO 5:



Mounting the Butterfly bracket

Please note: The waterproof camera is already attached to the license plate mounting bracket. To replace this with the butterfly bracket, simply remove the two screws behind the camera which attaches to the licence plate bracket. Then replace it with the butterfly bracket and attach it to the camera using the two screws that were used for the license plate bracket.

1. First, attach the butterfly bracket to the waterproof camera. Then find a suitable location on the rear side of your vehicle.
2. Clean the area where you are going to mount the camera using a clean cloth (not included) to remove any dirt, dust or grease.
3. Stick on the double-side tape on the rear side of the butterfly bracket, then attach the bracket with the camera to your vehicle. Press the bracket firmly onto your vehicle so that the bracket is stuck on.
4. Screw the supplied fixing screws via the bracket's slots, but don't fully tighten the screws.
5. Adjust the angle of the camera if required, then tighten the bracket screws.



Electrical Cable Installation Guide For Camera

The instructions below outline a standardised guide on how to connect the camera's wiring to the reversing light (see Figure 2).

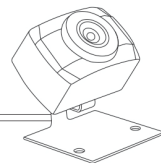
1. Once the camera has been mounted, either via the butterfly bracket or onto the licence plate, you will need to thread the wiring from the outside of your vehicle to your reversing lights. First, ensure the cable is fully unravelled. And make sure your vehicle is fully switched off. Never attempt to connect the wiring when the vehicle is switched on.
2. Depending on your vehicle, locate either a pre-drilled hole or grommets so you can thread the camera's wire through inside. If your vehicle does not have these holes, you will need to drill a hole to feed the cable through.
3. Then, refer to your vehicle's handbook to locate the positive and negative wires that lead to your vehicle's reversing light.
4. Using the supplied wiring buckles, connect the red buckle to the positive wire of the reversing light and the black buckle to the negative wire of the reversing light.
5. Once connected, switch on your vehicle and follow the operating instructions overleaf.

Fig. 2

Red wire connects to reversing light positive wire



Black wire connects to reversing light negative wire



Operating Instructions

The LCD display has three buttons on the back as shown in Figure 6 below.

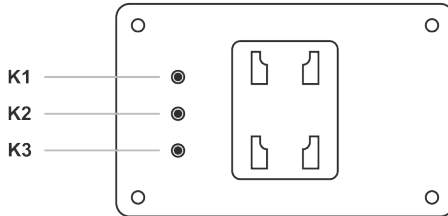


Fig. 6

How to Turn On/Off

To turn on the reversing aid kit, first ensure the LCD display is connected to your 12V socket AND make sure your vehicle is switched on.

Then press the On/Off button found on the 12V plug. The switch button will emit a solid red light to inform you that the unit is now switched on. Press the button again to turn off.

Pairing the Camera and LCD Monitor

Once the kit has been fully installed, you may need to pair both the camera and monitor (however they may pair automatically). To pair the camera and monitor, turn on the monitor and press and hold the K3 button for 3 seconds and the LCD monitor will show the following display (Figure 7)

Once paired, the LCD monitor will display the live feed directly from the camera.

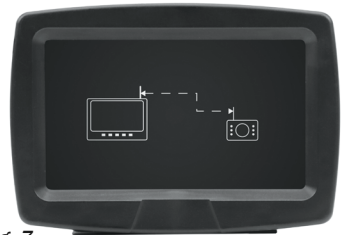


Fig. 7

Adjusting Brightness On Display

Press the K1 button repeatedly to adjust the brightness of the display. When the brightness reaches its max, the brightness will reset to its lowest setting (see Figure 8).



Fig. 8

Screen Orientation

Press the K2 button repeatedly to adjust the brightness of the display. When the brightness reaches its max, the brightness will reset to its lowest setting (see Figure 8).



Fig. 9

Reversing Guidelines

You can toggle the reversing guidelines to appear on the screen by pressing K3. Figure 10 shows how the reverse guidelines appear on screen.

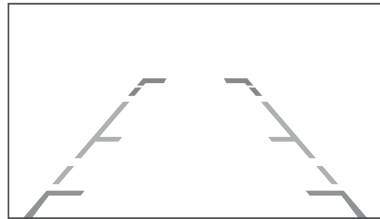


Fig. 10

Cleaning & Maintenance

Camera

- If the lens of the camera becomes obstructed with dirt, rain or snow, rinse with water and wipe with a soft, dry cloth.
- To clean the camera, wipe with a soft, clean cloth and a mild cleaner, then dry with a soft cloth. Do not use alcohol, benzene or thinner to clean the camera as this will cause discoloration and/or damage to the camera.

Monitor

- Turn off the monitor. If the screen is dark, it will be easier to see the areas that are dirty or oily.
- To clean the monitor use a soft, dry cloth to wipe the screen taking care not to press too hard directly on the LCD screen as this can damage the screen.
- For particularly stubborn marks, use a soft, damp cloth and a mixture of water and/or white vinegar. The plastic surround on the edge of the screen can be cleaned with any multipurpose cleaner, however take care to avoid contact with the LCD screen itself.
- Avoid using paper towels, toilet paper, tissue paper, or fabric to wipe the LCD screen as these materials can easily scratch the LCD screen.
- Avoid cleaning products that contain ammonia, ethyl alcohol, acetone, toluene, ethyl acid, or methyl chloride. These chemicals can react with the materials that the LCD screen is made of which could discolour and/or damage the screen.
- Do not spray liquids directly onto the LCD screen, as liquids could run inside the monitor and cause damage to both the Screen and the internal wiring.

Technical Support

If you require any technical support, please contact us on:

support@streetwizeaccessories.com

and provide product name and supplier code (see Technical Specifications) along with the technical query and proof of purchase.

Spare Parts

Should you require any replacement parts and/or spare parts for your product, please contact us on

support@streetwizeaccessories.com

and provide the product name, supplier code (see Technical Specifications) and model along with the name of the part that needs replacing.

Technical Specifications

Product

Product Name	Streetwise Wireless Reversing Aid Camera Kit
Supplier Code	SWRC43

Camera Specification

Sensor	Streetwise Wireless Reversing Aid Camera Kit
Effective Pixels	1280 x 720
Pixel Size	3.0 x 3.0 um
Minbimum Illumination	0 (IR ON)/5 (IR OFF) Lux
Sensitive	4000mV/Lux
Dynamic Range	72dB
Audio Compression	ADPCM
Video Compression	MJPEG
Operating Frequency	MHz 2400 - 2483.5
Data Bandwdith	4M (max) bps
Modulation/demodulation mode	GFSK
Code Match	Auto & Manual
Antenna impedance matching	50 Ω
Unobstructed effective range	>50m
Operating voltage	DC 9~36V
Operating current	0.3 Amps @ DC12V (max)
Operating temperature	-20~+65°C
Operating humidity	15%~85% RH
Storage humidity	5%~95% RH

LCD Monitor Specification

Video Frame	25 (max) fps
Transmission Resolution	640 x 480 pixels
Screen Resolution	480 x 272 pixels
Screen Brightness CD/M	2≥200
Screen size	4.3 inch TFT
Video system	PAL/NSTC Auto
Audio Compression	ADPCM
Video Compression	MJPEG
Operating Frequency	MHz 2400 - 2483.5
Data Bandwidth	4M (max) bps
Code Match	Manual
Data encryption	AES128 Bit
Antenna impedance matching	50 Ω
Unobstructed effective range	>50m
Operating voltage	DC 9~36V
Operating current	0.5 Amps @ DC12V (max)
Operating temperature	-20~+65°C
Storage Temperature	-20~+65°C
Operating humidity	15%~85% RH
Storage humidity	5%~95% RH



Streetwize: Ashburton Road West, Trafford Park, Manchester, M17 1RY

www.streetwizeaccessories.com

For product support:

E: support@streetwizeaccessories.com

T: +44 (0)161 447 8597

For trade enquiries:

E: sales@streetwizeaccessories.com

T: +44 (0)161 447 8580

For spare parts:

E: spareparts@streetwizeaccessories.com

EU Registered address: Ace Supply Co (Europe) Ltd. 25 Herbert Place, Dublin 2, D02 A098 Republic of Ireland.